

BRIDGE I-142
(CRANDIC Rail Bridge 18.15)
Crossing the Iowa River at Milepost 18.15
Middle Amana Vicinity
Iowa County
Iowa

HAER IA-100

PHOTOGRAPHS

WRITTEN HISTORICAL AND DESCRIPTIVE DATA

HISTORIC AMERICAN ENGINEERING RECORD
National Park Service
Midwest Regional Office
601 Riverfront Drive
Omaha NE 68102

HISTORIC AMERICAN ENGINEERING RECORD

INDEX TO PHOTOGRAPHS

BRIDGE I-142
(CRANDIC Rail Bridge 18.15)
Crossing the Iowa River at Milepost 18.15
Middle Amana Vicinity
Iowa County
Iowa

HAER IA-100

Daniel R. Pratt, photographer, May 2023.

Scale stick in photographs is 4 feet.

- | | |
|-----------|---|
| IA-100-1 | View of Bridge I-142 in Iowa River context, looking northeast. |
| IA-100-2 | View of Bridge I-142 downstream, looking northwest. |
| IA-100-3 | View of Bridge I-142 upstream, looking southeast. |
| IA-100-4 | View of Bridge I-142 west Howe truss, upstream, looking southeast. |
| IA-100-5 | View of Bridge I-142 plate girder truss, upstream, looking southeast. |
| IA-100-6 | View of Bridge I-142 eastern approach, looking south-southwest. |
| IA-100-7 | Oblique view of Bridge I-142 east abutment and east Howe truss, downstream east L ₀ joint and roller bearing, looking northwest. |
| IA-100-8 | View of Bridge I-142, east Howe truss, upstream east L ₀ joint and roller bearing, looking southeast. |
| IA-100-9 | Oblique view of Bridge I-142, east Howe truss, downstream east L ₀ , L ₁ , and U ₁ joints, looking north-northeast. |
| IA-100-10 | Oblique view of Bridge I-142 at Pier I, downstream view of L ₀ joint (west Howe truss on left) and L ₀ joint (east Howe truss on right), fixed bearing between Howe trusses, looking northwest. |

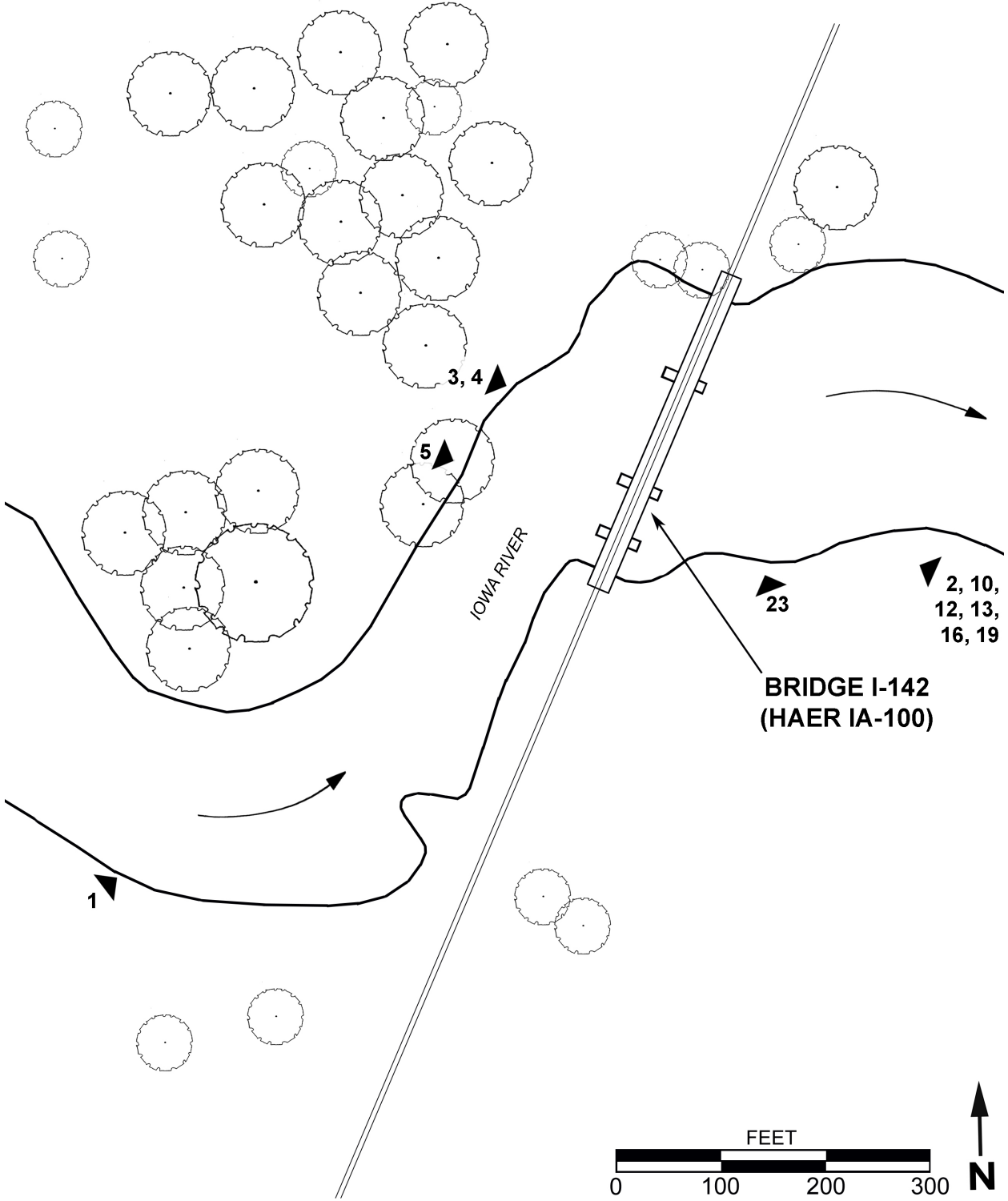
BRIDGE I-142
(CRANDIC Rail Bridge 18.15)
HAER No. IA-100
Index to Photographs
(Page 2)

- IA-100-11 Oblique view of Bridge I-142, downstream west L_0 joint of east Howe truss (at top) and downstream east L_0 joint of west Howe truss (at bottom), looking north-northeast.
- IA-100-12 Oblique view of Bridge I-142, west Howe truss, downstream L_3 joint (center), looking northwest.
- IA-100-13 Oblique view of Bridge I-142, west Howe truss, downstream west L_2 joint, looking northwest.
- IA-100-14 Oblique view of Bridge I-142, west Howe truss panels, looking north-northeast. Diagonal panel braces between downstream west B_2 and B_3 columns in foreground right.
- IA-100-15 Oblique view of Bridge I-142, west Howe truss, upstream west B_2 column, U_2 joint, and L_2 joint, looking north.
- IA-100-16 Oblique view of Bridge I-142, west Howe truss, downstream west L_1 joint, looking northwest.
- IA-100-17 Oblique view of Bridge I-142, west Howe truss, upstream west B_1 column, L_1 , and U_1 joints, looking north.
- IA-100-18 Oblique view of Bridge I-142, west Howe truss, downstream west inclined portal element (L_0 - U_1) with manufacturer nameplate reading "American Bridge Company of New York U.S.A. 1902," looking north-northeast.
- IA-100-19 Oblique view of Bridge I-142 at Pier II, downstream view of plate girder truss fixed bearing (on left) and west Howe truss L_0 joint and bearing (on right), looking northwest.
- IA-100-20 View of Bridge I-142, plate girder truss typical interior joints on upstream side, looking north-northeast.
- IA-100-21 Oblique view of Bridge I-142, west abutment and western end of downstream plate girder truss, looking southwest.
- IA-100-22 View of Bridge I-142 western approach, looking north-northeast.

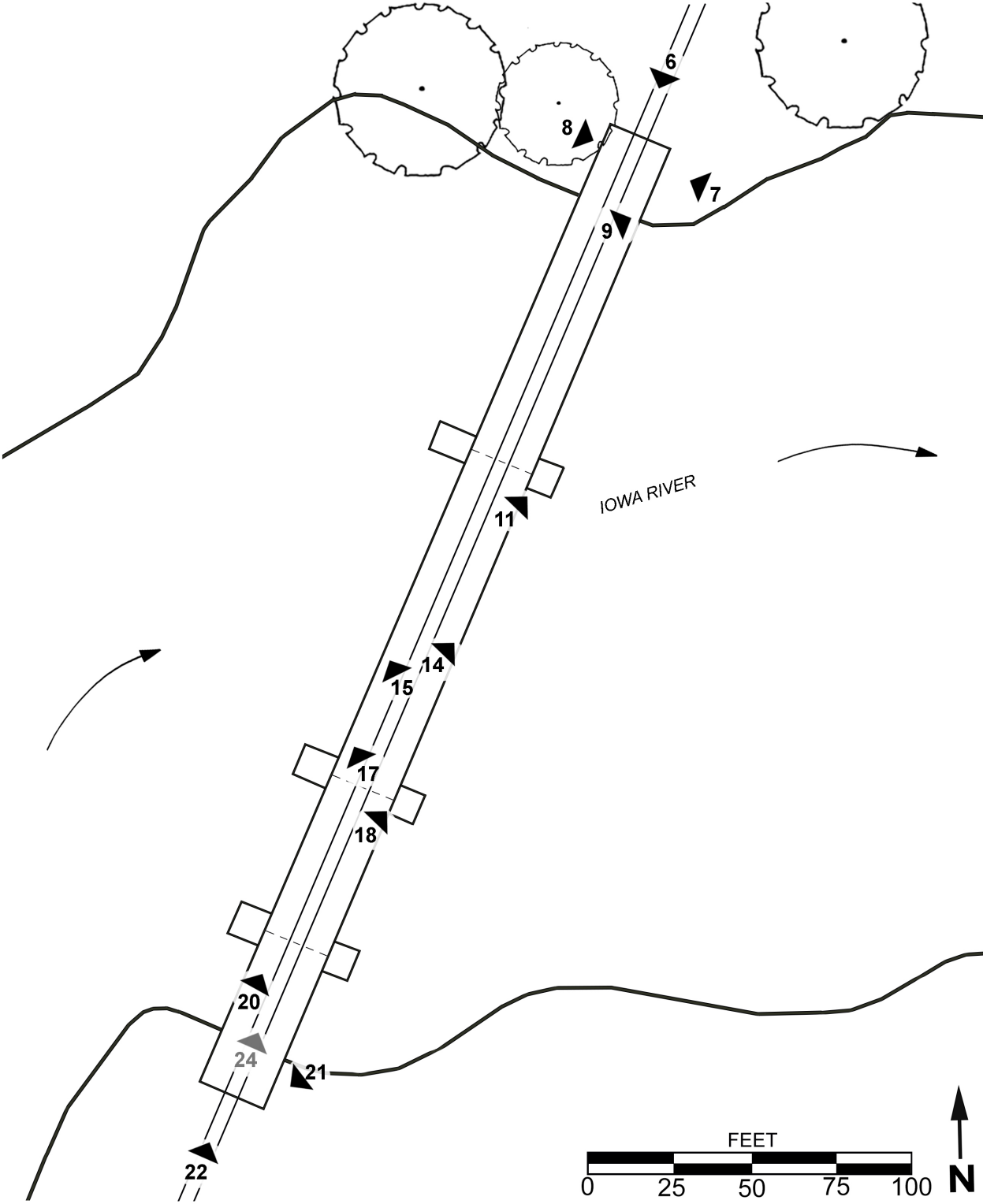
BRIDGE I-142
(CRANDIC Rail Bridge 18.15)
HAER No. IA-100
Index to Photographs
(Page 3)

- IA-100-23 Oblique view of Bridge I-142, south and east sides of Pier I, looking north-northwest.
- IA-100-24 View under Bridge I-142, showing plate girder truss deck structure and south side of Pier III, looking north-northeast.

BRIDGE I-142
(CRANDIC Rail Bridge 18.15)
HAER No IA-100
Key to Photographs
(Page 4)



BRIDGE I-142
(CRANDIC Rail Bridge 18.15)
HAER No IA-100
Key to Photographs
(Page 5)



HISTORIC AMERICAN ENGINEERING RECORD
SEE INDEX TO PHOTOGRAPHS FOR CAPTION

HAER No. IA-100-1



HISTORIC AMERICAN ENGINEERING RECORD
SEE INDEX TO PHOTOGRAPHS FOR CAPTION

HAER No. IA-100-2



HISTORIC AMERICAN ENGINEERING RECORD
SEE INDEX TO PHOTOGRAPHS FOR CAPTION

HAER No. IA-100-3



HISTORIC AMERICAN ENGINEERING RECORD
SEE INDEX TO PHOTOGRAPHS FOR CAPTION

HAER No. IA-100-4



HISTORIC AMERICAN ENGINEERING RECORD
SEE INDEX TO PHOTOGRAPHS FOR CAPTION

HAER No. IA-100-5



HISTORIC AMERICAN ENGINEERING RECORD
SEE INDEX TO PHOTOGRAPHS FOR CAPTION

HAER No. IA-100-6



HISTORIC AMERICAN ENGINEERING RECORD
SEE INDEX TO PHOTOGRAPHS FOR CAPTION

HAER No. IA-100-7



HISTORIC AMERICAN ENGINEERING RECORD
SEE INDEX TO PHOTOGRAPHS FOR CAPTION

HAER No. IA-100-8



HISTORIC AMERICAN ENGINEERING RECORD
SEE INDEX TO PHOTOGRAPHS FOR CAPTION

HAER No. IA-100-9



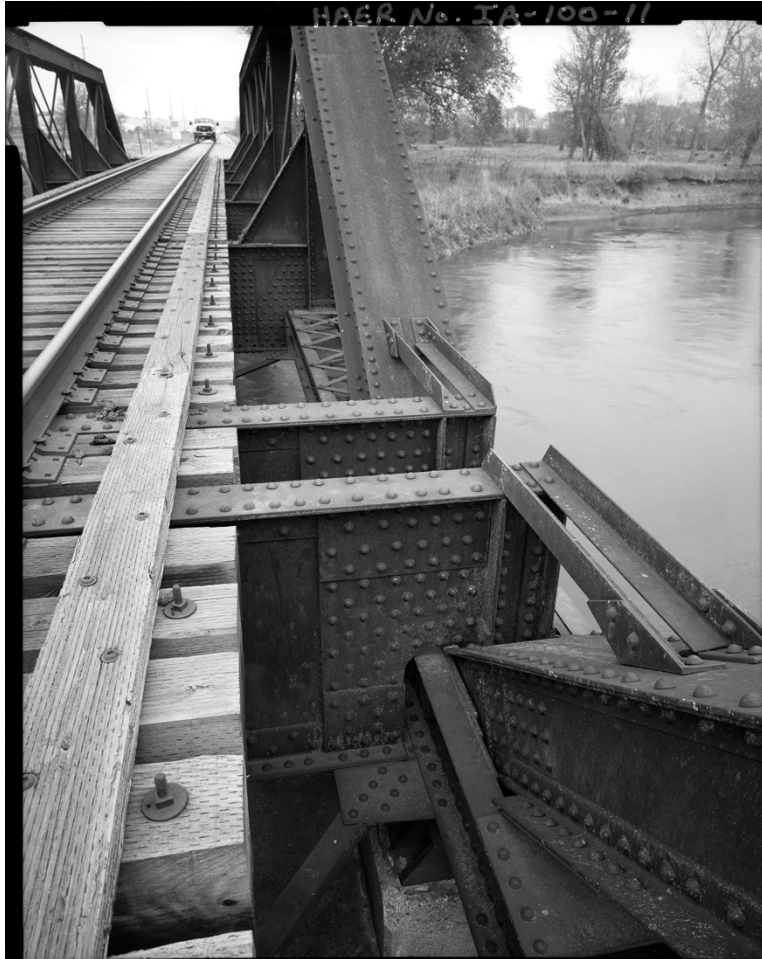
HISTORIC AMERICAN ENGINEERING RECORD
SEE INDEX TO PHOTOGRAPHS FOR CAPTION

HAER No. IA-100-10



HISTORIC AMERICAN ENGINEERING RECORD
SEE INDEX TO PHOTOGRAPHS FOR CAPTION

HAER No. IA-100-11



HISTORIC AMERICAN ENGINEERING RECORD
SEE INDEX TO PHOTOGRAPHS FOR CAPTION

HAER No. IA-100-12



HISTORIC AMERICAN ENGINEERING RECORD
SEE INDEX TO PHOTOGRAPHS FOR CAPTION

HAER No. IA-100-13



HISTORIC AMERICAN ENGINEERING RECORD
SEE INDEX TO PHOTOGRAPHS FOR CAPTION

HAER No. IA-100-14



HISTORIC AMERICAN ENGINEERING RECORD
SEE INDEX TO PHOTOGRAPHS FOR CAPTION

HAER No. IA-100-15



HISTORIC AMERICAN ENGINEERING RECORD
SEE INDEX TO PHOTOGRAPHS FOR CAPTION

HAER No. IA-100-16



HISTORIC AMERICAN ENGINEERING RECORD
SEE INDEX TO PHOTOGRAPHS FOR CAPTION

HAER No. IA-100-17



HISTORIC AMERICAN ENGINEERING RECORD
SEE INDEX TO PHOTOGRAPHS FOR CAPTION

HAER No. IA-100-18



HISTORIC AMERICAN ENGINEERING RECORD
SEE INDEX TO PHOTOGRAPHS FOR CAPTION

HAER No. IA-100-19



HISTORIC AMERICAN ENGINEERING RECORD
SEE INDEX TO PHOTOGRAPHS FOR CAPTION

HAER No. IA-100-20



HISTORIC AMERICAN ENGINEERING RECORD
SEE INDEX TO PHOTOGRAPHS FOR CAPTION

HAER No. IA-100-21



HISTORIC AMERICAN ENGINEERING RECORD
SEE INDEX TO PHOTOGRAPHS FOR CAPTION

HAER No. IA-100-22



HISTORIC AMERICAN ENGINEERING RECORD
SEE INDEX TO PHOTOGRAPHS FOR CAPTION

HAER No. IA-100-23



HISTORIC AMERICAN ENGINEERING RECORD
SEE INDEX TO PHOTOGRAPHS FOR CAPTION

HAER No. IA-100-24

